

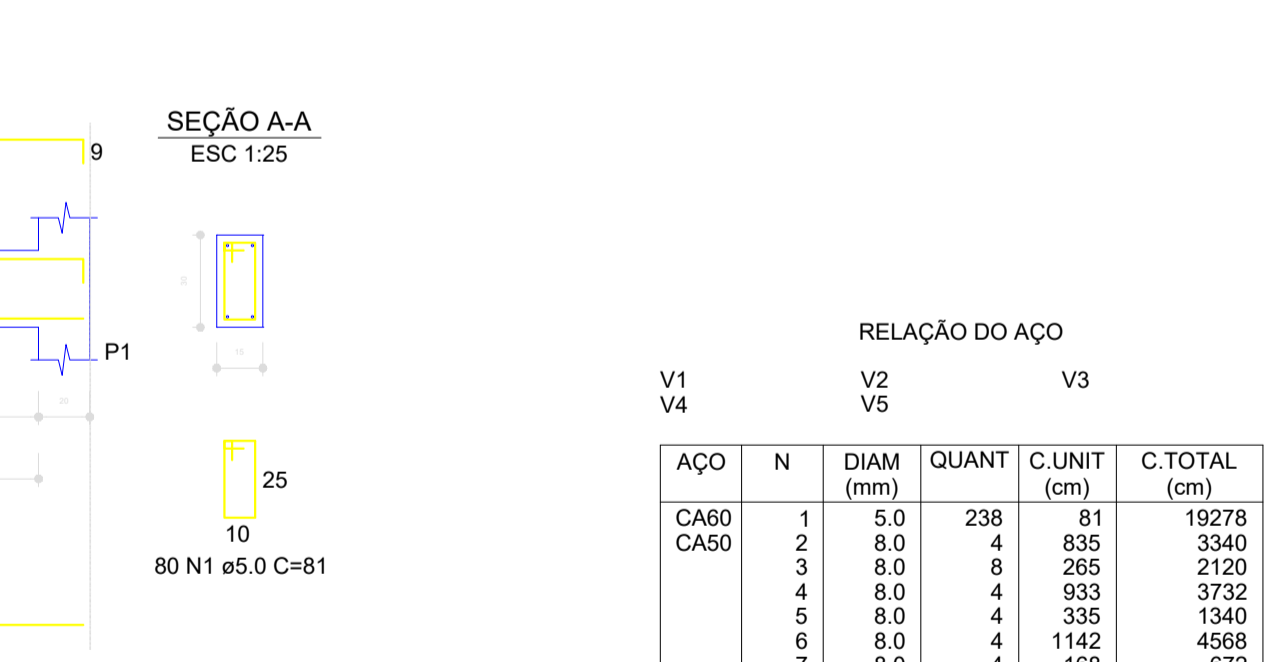
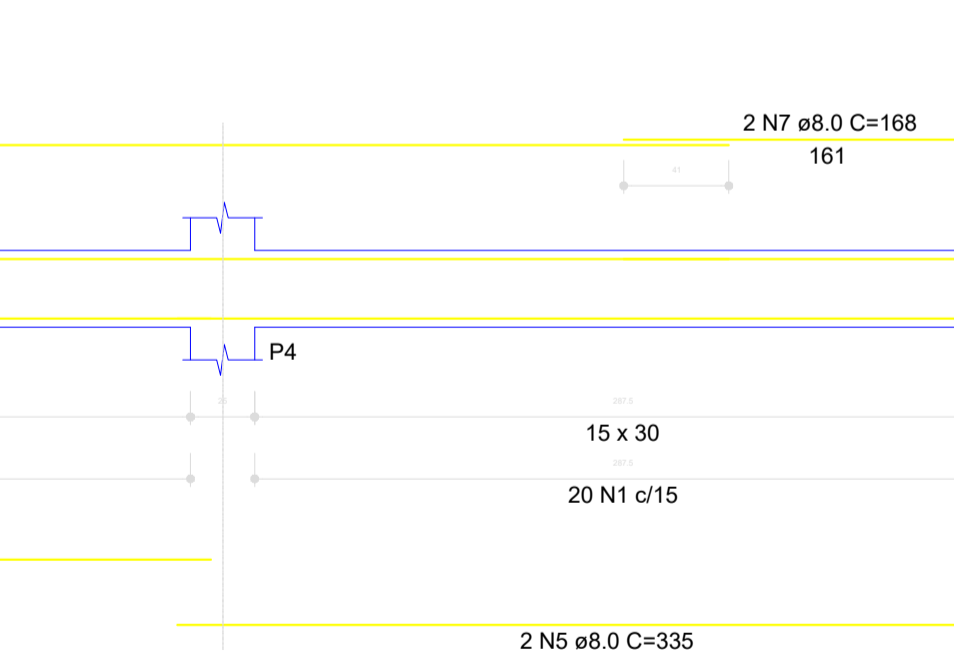
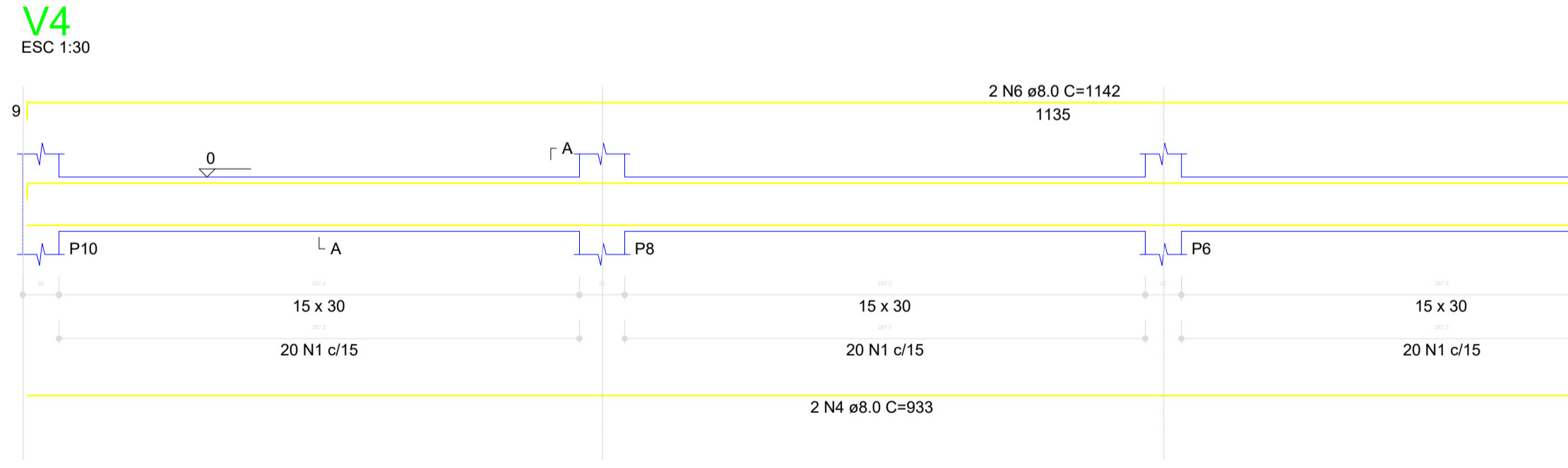
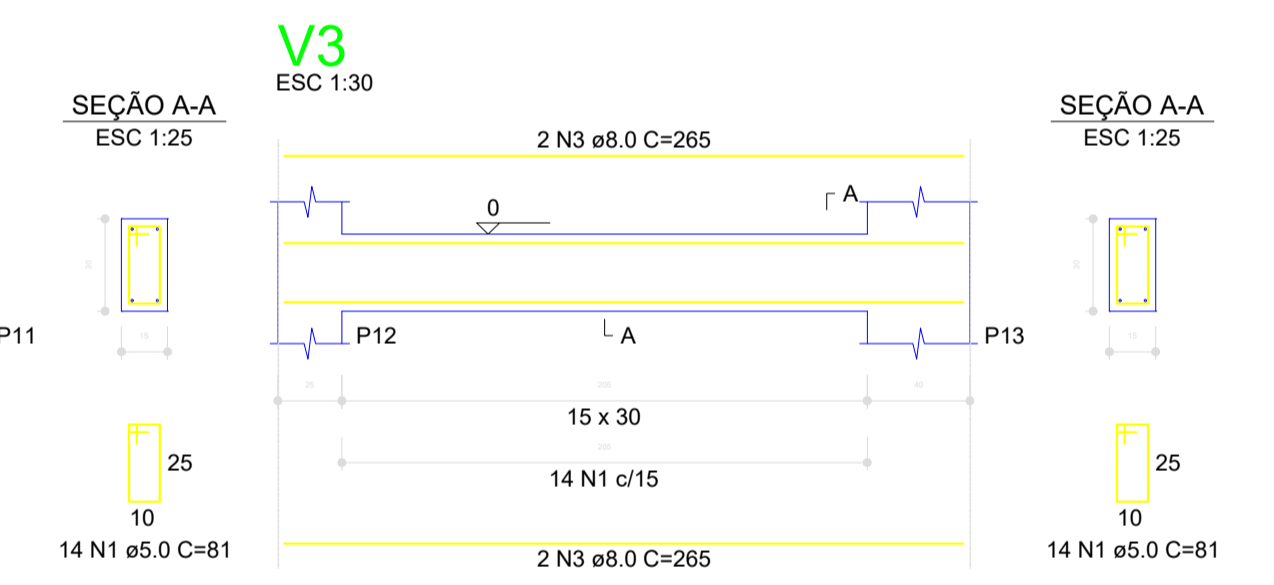
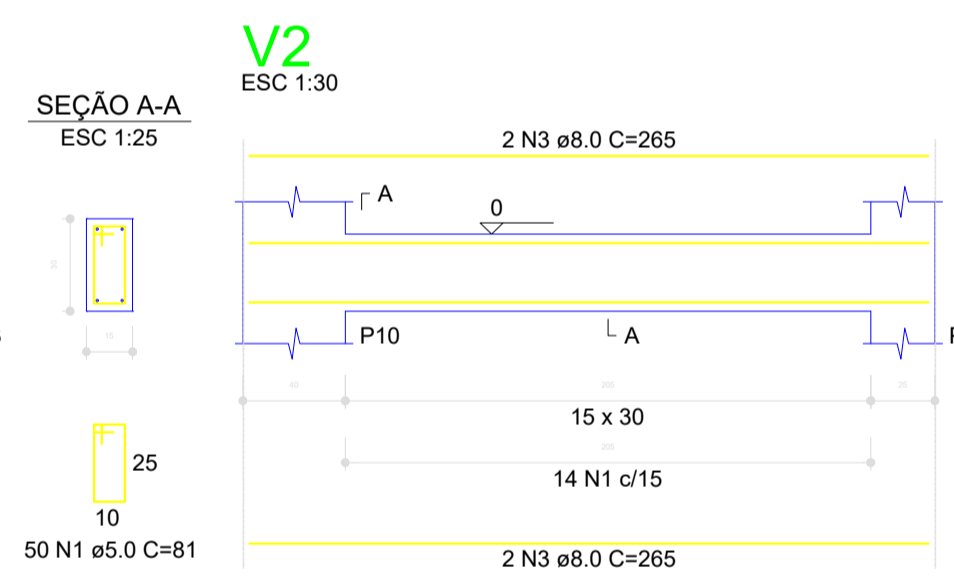
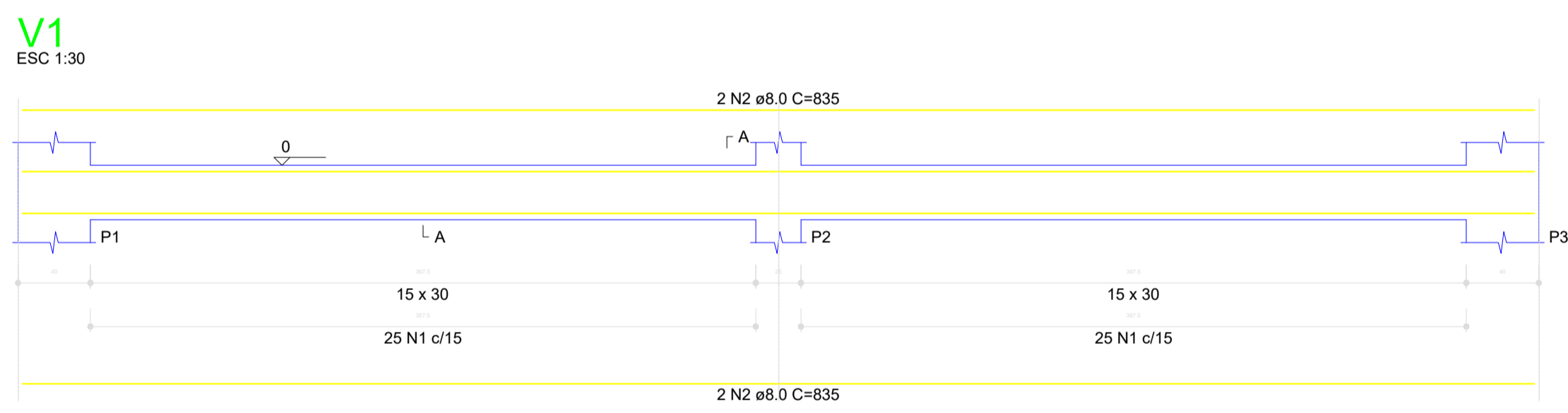
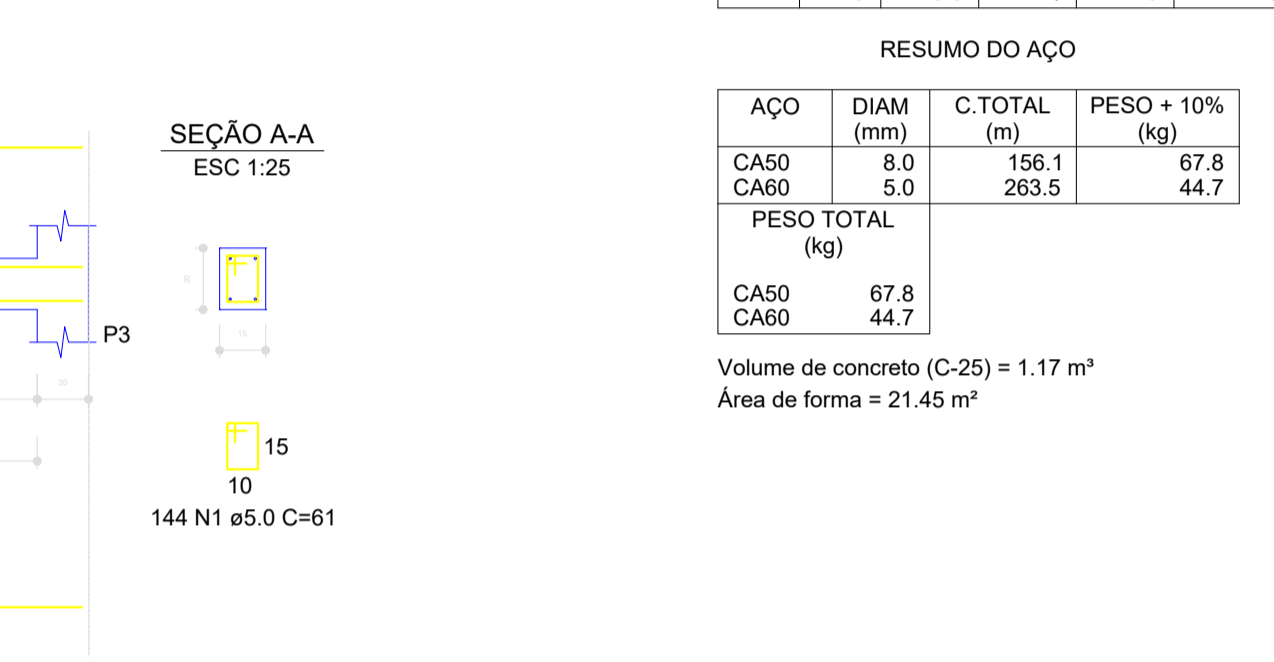
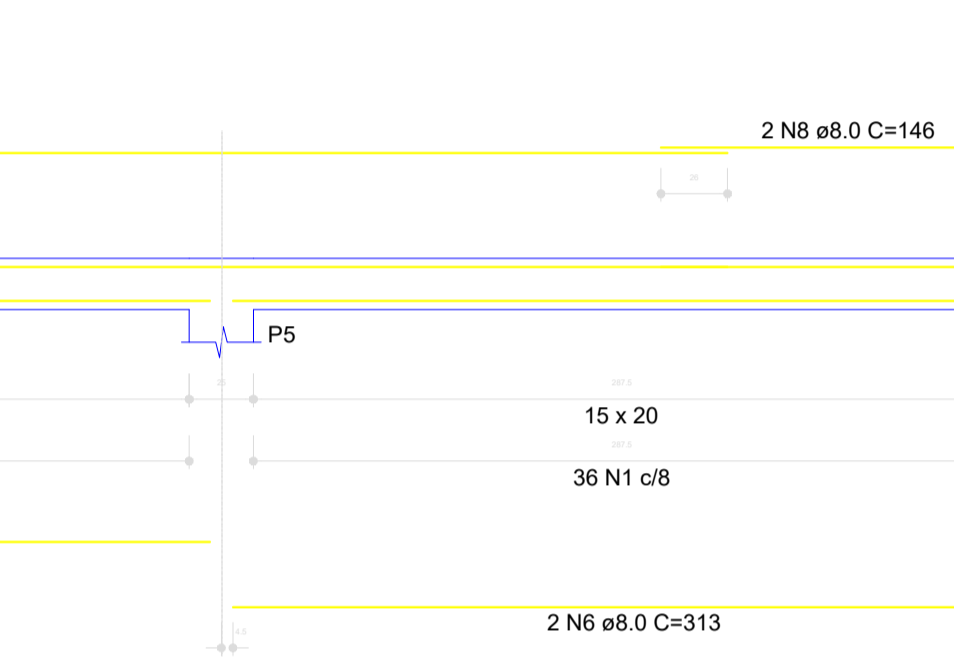
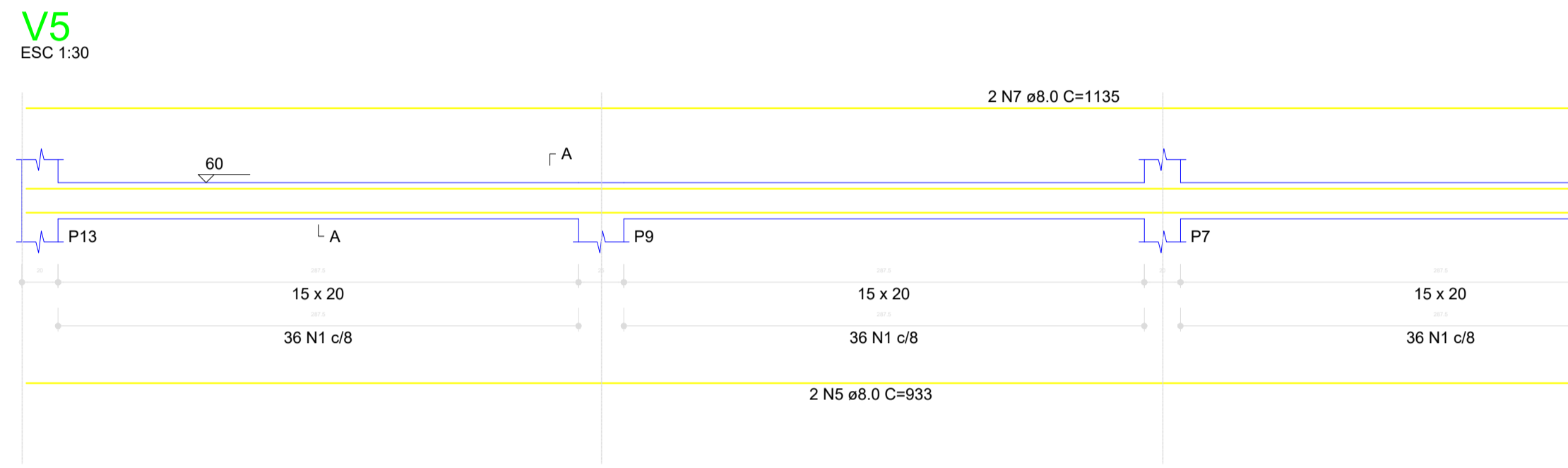
RELAÇÃO DO AÇO

AÇO	N	DIAM (mm)	QUANT	C.UNIT (cm)	C.TOTAL (cm)
CA60	1	5.0	432	61	26352
CA50	2	8.0	4	835	3340
	3	8.0	4	265	1060
	4	8.0	4	276	1104
	5	8.0	4	933	3732
	6	8.0	4	313	1252
	7	8.0	4	1135	4540
	8	8.0	4	146	584

RESUMO DO AÇO

AÇO	DIAM (mm)	C.TOTAL (m)	PESO + 10% (kg)
CA50	8.0	156.1	67.8
CA60	5.0	263.5	44.7
PESO TOTAL (kg)			
CA50			67.8
CA60			44.7

Volume de concreto (C-25) = 1.17 m³  
Área de forma = 21.45 m²



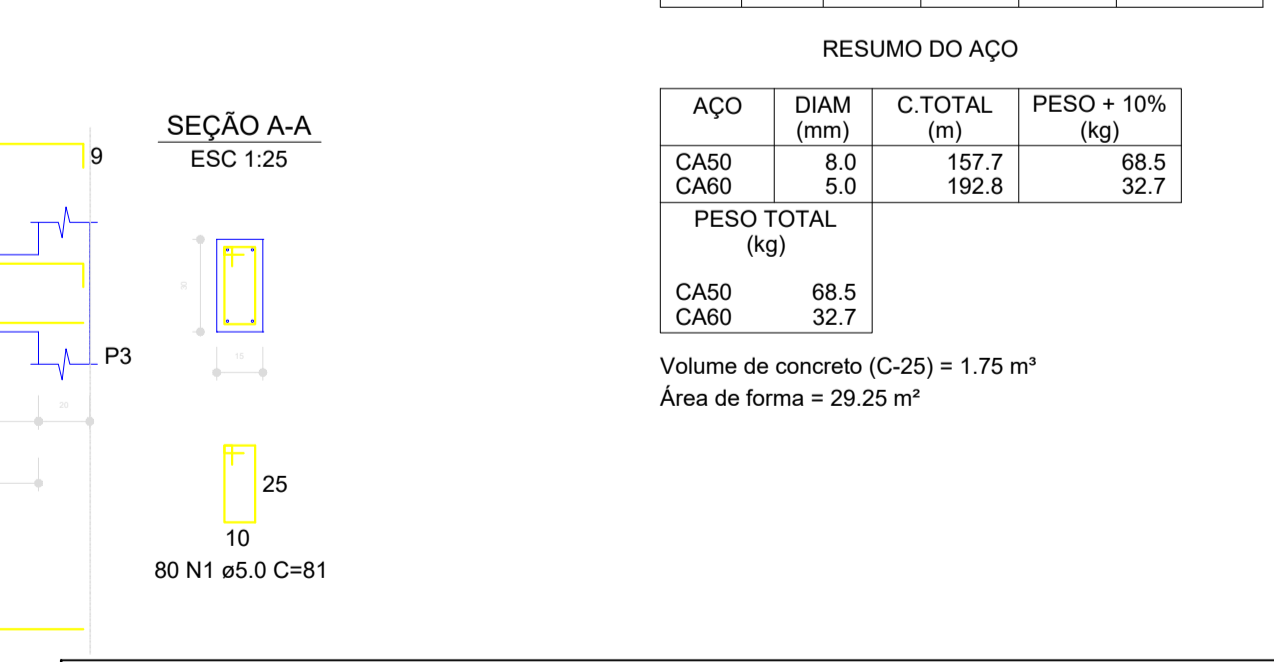
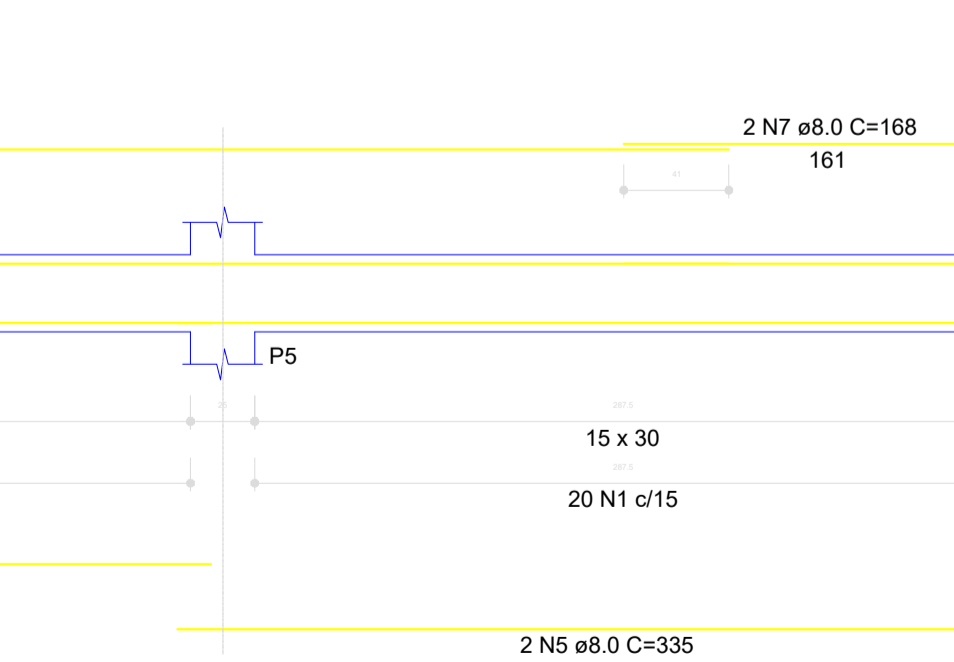
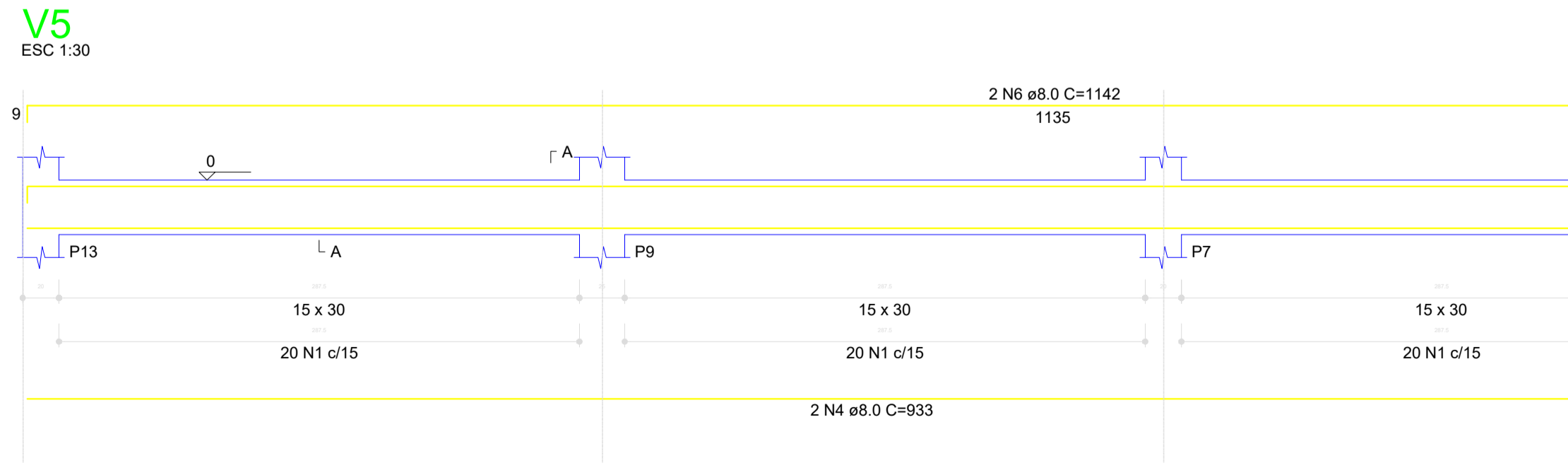
RELAÇÃO DO AÇO

AÇO	N	DIAM (mm)	QUANT	C.UNIT (cm)	C.TOTAL (cm)
CA60	1	5.0	238	81	19278
CA50	2	8.0	4	835	3340
	3	8.0	8	265	2120
	4	8.0	4	933	3732
	5	8.0	4	335	1340
	6	8.0	4	1142	4568
	7	8.0	4	168	672

RESUMO DO AÇO

AÇO	DIAM (mm)	C.TOTAL (m)	PESO + 10% (kg)
CA50	8.0	157.7	68.5
CA60	5.0	192.8	32.7
PESO TOTAL (kg)			
CA50			68.5
CA60			32.7

Volume de concreto (C-25) = 1.75 m³  
Área de forma = 29.25 m²



CARIMBO E ASSINATURA:

JOÃO CALANDRINI DE SÁ AZEVEDO NETO  
ENGENHEIRO CIVIL  
CREA/PA: 1515893081

ESCALA: Conforme indicado  
DATA: 13/11/2023  
ARQUIVO:  
RESPONSÁVEL TÉCNICO: JOÃO CALANDRINI DE SÁ AZEVEDO NETO

REFORMA E AMPLIAÇÃO DA ESCOLA MUNICIPAL DE ENSINO INFANTIL ERMÍNIO BRITO

FOLHA 03/06

PROJETO: ARQUITETÔNICO E ESTRUTURAL GALPÃO  
PROPRIETÁRIO(A): PREFEITURA MUNICIPAL DE CUMARU DO NORTE  
LOCAL: CUMARU DO NORTE/PA

Estado do Pará